



# 2017 – 2018 Monthly Financial Report

For the Month Ended September 30, 2017



**Kelvin R. Adams PhD, Superintendent of Schools**

Saint Louis Public Schools

801 N. 11<sup>th</sup> Street

St. Louis, MO 63101

(314) 231-3720

[www.slps.org](http://www.slps.org)



**Rick Sullivan**



**President and CEO**

**Darnetta Clinkscale**



**SAB Member**

**Richard K. Gaines**



**SAB Member**



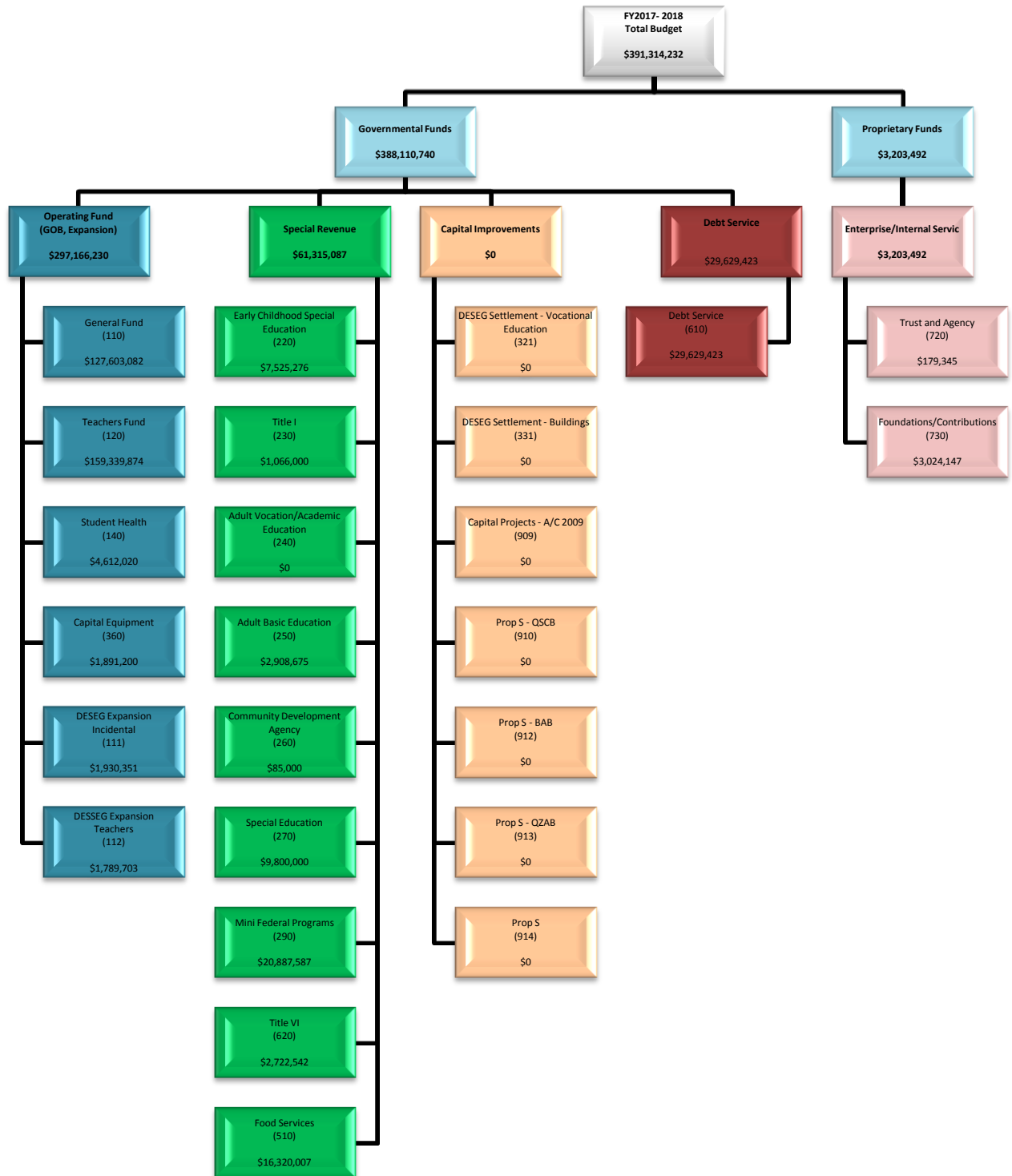
**Kelvin R. Adams, PhD**

**Superintendent of Schools**

801 North 11th Street • St. Louis, MO 63101 • (314) 231- 3720

## Contents

<b>SLPS Budget by Fund (all funds)</b> .....	1
<b>SLPS YTD Budget to Actual by Fund (all funds)</b> .....	2
<b>Balance Sheet – Governmental Funds</b> .....	3
<b>Statement of Revenue, Expenditures and Changes in Fund Balances – Governmental Funds</b> .....	4



**FY 2018**  
**SLPS YTD Budget-to-Actual by Fund (all funds)**  
**For The Period Ended September 30, 2017**

FUND CODE	FUND DESCRIPTION	FY 2018 ADOPTED BUDGET	FY 2018 CURRENT BUDGET	FY 2018 YTD SPEND	REMAINING BALANCE	YTD Spend % (Current Budget)
110	INCIDENTAL	127,603,082	127,615,917	22,454,840	105,161,077	17.60%
111	Deseg Transfer 110	1,930,351	1,952,932	228,822	1,724,110	11.72%
112	Deseg Transfer 120	1,789,703	1,789,703	285,416	1,504,287	15.95%
120	TEACHERS FUND	159,339,874	159,328,097	21,927,875	137,400,222	13.76%
140	STUDENT HEALTH FUND	4,612,020	4,612,020	173,770	4,438,250	3.77%
360	CAPITAL EQUIPMENT	1,891,200	1,891,200	1,081,335	809,865	57.18%
510	SCHOOL LUNCHROOM	16,320,007	16,332,767	1,917,615	14,415,153	11.74%
610	DEBT SERVICE	29,629,423	29,629,423	4,125,074	25,504,349	13.92%
	<b>*SAB Adopted Funds</b>	<b>343,115,660</b>	<b>343,152,059</b>	<b>52,194,746</b>	<b>290,957,313</b>	<b>15.21%</b>
220	EARLY CHILDHOOD SPEC	7,525,276	7,226,974	842,411	6,384,563	11.66%
230	TITLE I IASA	1,066,000	5,534,175	2,147,014	3,387,161	38.80%
240	ADULT VOCATION/ACAD	-	1,124,759	97,609	1,027,149	8.68%
250	ADULT BASIC ED 1999-	2,908,675	2,616,371	385,377	2,230,994	14.73%
260	COMM DEVELOP AGENCY	85,000	50,000	7,149	42,851	14.30%
270	PL 94-142 SPEC ED 09	9,800,000	7,438,478	448,033	6,990,445	6.02%
290	MINI FEDERAL PROG 19	20,887,587	4,632,691	470,852	4,161,839	10.16%
620	TITLE VI 1999-00	2,722,542	2,051,542	453,978	1,597,564	22.13%
	<b>*Special Revenue Funds</b>	<b>44,995,080</b>	<b>30,674,989</b>	<b>4,852,424</b>	<b>25,822,566</b>	<b>15.82%</b>
720	TRUST AGENCY & ENTER	179,345	219,675	29,357	190,318	13.36%
730	FOUND CONTRI INCID 9	3,024,147	1,978,328	364,003	1,614,325	18.40%
	<b>*Self Funding Funds</b>	<b>3,203,492</b>	<b>2,198,003</b>	<b>393,360</b>	<b>1,804,643</b>	<b>17.90%</b>
	<b>**BUDGETED FUNDS</b>	<b>391,314,232</b>	<b>376,025,051</b>	<b>57,440,530</b>	<b>318,584,522</b>	<b>15.28%</b>

\* Special Revenue Fund amounts are estimates based upon grant application amount. The actual amounts received for each respective grant may vary from budgeted amount and are fully disclosed in the District's Comprehensive Annual Financial Report. Some grants include roll-forward amounts from prior year.

\*\* Funds from DESEG Settlement have been deposited in DESEG Capital (Fund 331) and are allocated out to DESEG Expansion (Funds 111, 112, and 113) in accordance with settlement plan spend down schedule.

**St. Louis Public Schools**  
**Balance Sheet – Governmental Funds**  
**For The Period Ended September 30, 2017**

	General	Teachers	Debt Service	Building	DESEG Vocation Ed (321)	DESEG Settlement (331)	Non-Major Governmental Funds (Non-Majors Tab)	Total Governmental Funds
<b>ASSETS</b>								
<b>Cash and Investments</b>								
Cash and Investments	31,011,098	(9,959,857)	7,977,002	(1,067,525)	521,146	3,559,621	10,541,754	42,583,238
Investments held for Bond Indebtedness	-	-	13,729,352	-	-	-	-	13,729,352
<b>Total Cash and Investments</b>	<b>31,011,098</b>	<b>(9,959,857)</b>	<b>21,706,354</b>	<b>(1,067,525)</b>	<b>521,146</b>	<b>3,559,621</b>	<b>10,541,754</b>	<b>56,312,590</b>
<b>Receivables</b>								
Receivables - Grants	-	-	-	-	-	-	10,848,553	10,848,553
Receivables - Taxes	13,226,664	-	2,041,148	-	-	-	-	15,267,812
Receivables - Other	673,930	-	-	42,430	-	-	796,454	1,512,814
<b>Total Receivables</b>	<b>13,900,594</b>	<b>-</b>	<b>2,041,148</b>	<b>42,430</b>	<b>-</b>	<b>-</b>	<b>11,645,008</b>	<b>27,629,179</b>
Due from other Funds	201,297,106	189,901,412	-	-	-	-	-	391,198,517
Prepaid assets	-	-	-	-	-	-	-	-
Inventories	-	-	-	-	-	-	-	-
Provision for retirement of LT Debt	-	-	-	-	-	-	-	-
<b>Total Other Assets</b>	<b>201,297,106</b>	<b>189,901,412</b>	<b>-</b>	<b>-</b>	<b>-</b>	<b>-</b>	<b>-</b>	<b>391,198,517</b>
<b>TOTAL ASSETS</b>	<b>246,208,797</b>	<b>179,941,555</b>	<b>23,747,502</b>	<b>(1,025,095)</b>	<b>521,146</b>	<b>3,559,621</b>	<b>22,186,762</b>	<b>475,140,287</b>
<b>LIABILITIES AND FUND BALANCES</b>								
<b>LIABILITIES</b>								
Accounts Payable	1,536,722	6,216,888	-	-	-	-	101,275	7,854,884
Retainage Payable	-	-	-	25,170	-	-	-	25,170
Claims Payable	-	-	-	-	-	-	-	-
Loan Payable	-	-	-	-	-	-	-	-
Accrued Vacation Liability	-	-	-	-	-	-	-	-
Other Accrued Liabilities	-	-	-	-	-	-	(0)	(0)
Due to Other Funds	189,901,412	182,429,056	-	-	-	-	18,868,049	391,198,517
Deposits and Escrow Funds	-	-	-	-	-	-	-	-
Due to other funds Unearned Revenue	-	-	-	-	-	-	5,471,202	5,471,202
Deferred Tax Revenue	13,226,664	-	2,041,148	-	-	-	-	15,267,812
<b>TOTAL LIABILITIES</b>	<b>204,664,798</b>	<b>188,645,944</b>	<b>2,041,148</b>	<b>25,170</b>	<b>-</b>	<b>-</b>	<b>24,440,525</b>	<b>419,817,585</b>
<b>FUND BALANCES</b>								
Nonspendable	-	-	-	-	-	-	-	-
Inventories	-	-	-	-	-	-	-	-
Permanent Fund Principal (Fund 72)	-	-	-	-	-	-	-	-
<b>Total Nonspendable</b>	<b>-</b>	<b>-</b>	<b>-</b>	<b>-</b>	<b>-</b>	<b>-</b>	<b>-</b>	<b>-</b>
<b>Restricted for :</b>								
Bonded Indebtedness	-	-	-	-	-	-	-	-
Capital Projects	-	-	-	-	-	-	-	-
Desegregation settlement programs	-	-	-	-	-	-	-	-
<b>Total Restricted</b>	<b>-</b>	<b>-</b>	<b>-</b>	<b>-</b>	<b>-</b>	<b>-</b>	<b>-</b>	<b>-</b>
<b>Assigned to :</b>								
School lunchroom	-	-	-	-	-	-	-	-
Community Development Agency	-	-	-	-	-	-	-	-
Adult education	-	-	-	-	-	-	-	-
<b>Total Assigned</b>	<b>-</b>	<b>-</b>	<b>-</b>	<b>-</b>	<b>-</b>	<b>-</b>	<b>-</b>	<b>-</b>
Unassigned	41,543,999	(8,704,389)	21,706,354	(1,050,265)	521,146	3,559,621	(2,253,764)	55,322,702
<b>Total Fund Balances</b>	<b>41,543,999</b>	<b>(8,704,389)</b>	<b>21,706,354</b>	<b>(1,050,265)</b>	<b>521,146</b>	<b>3,559,621</b>	<b>(2,253,764)</b>	<b>55,322,702</b>
<b>TOTAL LIABILITIES AND FUND BALANCES</b>	<b>246,208,797</b>	<b>179,941,555</b>	<b>23,747,502</b>	<b>(1,025,095)</b>	<b>521,146</b>	<b>3,559,621</b>	<b>22,186,762</b>	<b>475,140,287</b>

**St. Louis Public Schools**  
**Statement of Revenues, Expenditures and Changes in Fund Balances – Governmental Funds**  
**For The Period Ended September 30, 2017**

	General Fund (110,111)	Teachers Fund (120,112)	Debt Service (610)	Building (360,113)	DESEG Vocation Ed (321)	DESEG Settlement (331)	Non-Major Governmental Funds (Non-Majors Tab)	Total Governmental Funds
<b>REVENUES</b>								
<b>Local</b>								
Current Taxes	3,015,414	6,144,447	-	-	-	-	-	9,159,861
Delinquent Taxes	1,083,456	-	161,951	-	-	-	-	1,245,406
Interest on Investments	114,632	-	21,251	3,570	1,240	-	7,521	148,214
Other	177,544	-	-	27,500	-	-	202,024	407,067
<b>Local Total</b>	<b>4,391,046</b>	<b>6,144,447</b>	<b>183,202</b>	<b>31,070</b>	<b>1,240</b>	<b>-</b>	<b>209,545</b>	<b>10,960,550</b>
County	-	17,555	-	-	-	-	-	17,555
State	2,946,436	7,310,270	-	-	-	-	250,991	10,507,697
Federal	95,255	36,630	-	-	-	-	1,929,330	2,061,215
<b>TOTAL REVENUES</b>	<b>7,432,737</b>	<b>13,508,901</b>	<b>183,202</b>	<b>31,070</b>	<b>1,240</b>	<b>-</b>	<b>2,389,866</b>	<b>23,547,016</b>
<b>EXPENDITURES</b>								
<b>Current :</b>								
Instructional	2,190,229	16,951,727	-	-	-	-	2,265,571	21,407,527
Building Services	7,701,652	35,690	-	1,066,857	-	-	-	8,804,199
Administration	4,121,352	2,730,234	-	-	-	-	9,721	6,861,308
Instructional Support	2,249,233	1,546,334	-	-	-	-	1,625,018	5,420,585
Non-Instructional Support	4,346,384	215,887	-	102	-	-	126,556	4,688,929
Transportation	1,512,140	-	-	-	-	-	165,770	1,677,910
Food and Community Services	551,843	733,418	-	-	-	-	3,140,753	4,426,015
<b>Total Current Expenditures</b>	<b>22,672,833</b>	<b>22,213,291</b>	<b>-</b>	<b>1,066,959</b>	<b>-</b>	<b>-</b>	<b>7,333,390</b>	<b>53,286,472</b>
Capital Outlay	10,829	-	-	14,377	-	-	3,778	28,984
Debt Service	-	-	-	-	-	-	-	-
Bond Principal Retirement	-	-	-	-	-	-	-	-
Bond Interest Expense	-	-	4,125,074	-	-	-	-	4,125,074
Bond Issuance Costs	-	-	-	-	-	-	-	-
<b>Total Expenditures</b>	<b>22,683,662</b>	<b>22,213,291</b>	<b>4,125,074</b>	<b>1,081,335</b>	<b>-</b>	<b>-</b>	<b>7,337,168</b>	<b>57,440,530</b>
<b>Excess (Deficiency) Revenue - Expense</b>	<b>(15,250,925)</b>	<b>(8,704,389)</b>	<b>(3,941,872)</b>	<b>(1,050,265)</b>	<b>1,240</b>	<b>-</b>	<b>(4,947,303)</b>	<b>(33,893,514)</b>
<b>Other Financing Sources (Uses)</b>								
Transfers In	3,234,878	-	-	-	-	-	-	3,234,878
Transfers out	-	-	-	-	-	(3,234,878)	-	(3,234,878)
Issuance of Bonds	-	-	-	-	-	-	-	-
Payment to refunding escrow agent	-	-	-	-	-	-	-	-
Premium on issuance of bonds	-	-	-	-	-	-	-	-
<b>Total Other Financing Sources (Uses)</b>	<b>3,234,878</b>	<b>-</b>	<b>-</b>	<b>-</b>	<b>-</b>	<b>(3,234,878)</b>	<b>-</b>	<b>-</b>
<b>Net Change in Fund Balances</b>	<b>(12,016,047)</b>	<b>(8,704,389)</b>	<b>(3,941,872)</b>	<b>(1,050,265)</b>	<b>1,240</b>	<b>(3,234,878)</b>	<b>(4,947,303)</b>	<b>(33,893,514)</b>
<b>Fund Balances - Beginning of period</b>	<b>53,560,046</b>	<b>-</b>	<b>25,648,226</b>	<b>-</b>	<b>519,906</b>	<b>6,794,499</b>	<b>2,693,539</b>	<b>89,216,216</b>
<b>Fund Balances - End of Period</b>	<b>41,543,999</b>	<b>(8,704,389)</b>	<b>21,706,354</b>	<b>(1,050,265)</b>	<b>521,146</b>	<b>3,559,621</b>	<b>(2,253,764)</b>	<b>55,322,702</b>